

SIP Trunking using the Optimum Business SIP Trunk Adaptor and the TalkSwitch 848 vs IP-PBX Version 6.12.078

Goal

The purpose of this document is to describe the steps needed to configure the Talkswitch IP PBX version 6.12.078 for proper operation with Optimum Business Sip Trunking.

Prerequisites

Please follow the instructions in the Optimum Business SIP Trunk Set-Up Guide. The Set-Up Guide was left by the Optimum Business technician at installation. If you do not have the Set-Up Guide, go to optimumbusiness.com/SIP to download a copy.

The Optimum Business Sip Trunk Adaptor needs to be configured to Convert Inband DTMF. This is step 3 in the Optimum Business Sip Trunk Set-up Guide.

This guide provides the configuration steps for both PBX registration and static, non-registration modes of PBX operation.

Talkswitch Configuration

The steps below describe the minimum configuration required to enable the Talkswitch PBX to use the Optimum Business SIP trunk for inbound and outbound calling. Please refer to the Talkswitch product documentation for more information on advanced PBX features.

Prerequisites: Java installed on Windows Machine, Flash Player 10.

When connecting to the Talkswitch from the LAN with a PC, make sure there is no other enabled NIC or Network (like wireless) on the PC. This will interfere with the configuration process.

Configuration:

Plug PC into LAN side of PBX. By default a 192.168.3.1

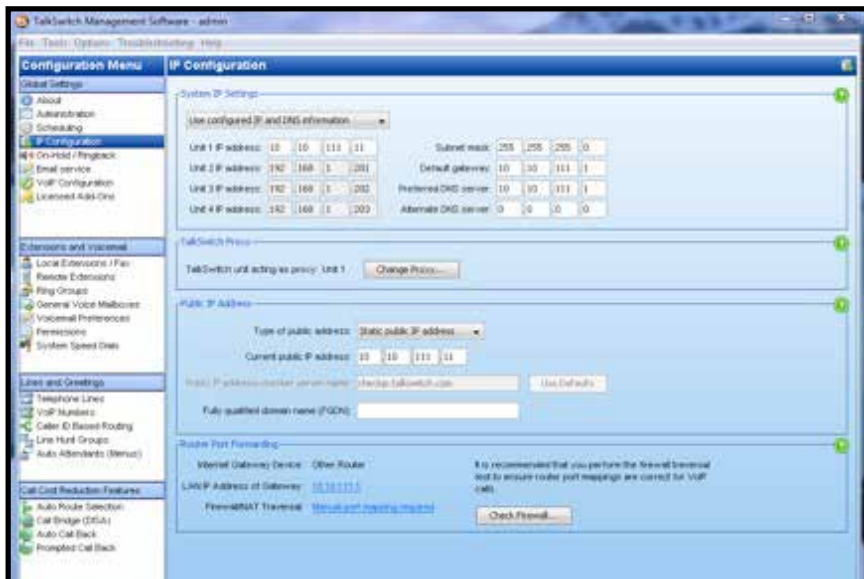
By default the password will be 1234

In this configuration guide the IP address will be 10.10.111.11.

- 1 Start by detecting the Talkswitch and connecting to it via the LAN.



- 2 Configure the IP address settings for the Talkswitch to work properly with the network it will be residing on. Configuration Menu ▶ IP Configuration.



3 Configure the VoIP/SIP Server settings.

Configuration Menu ▶ VoIP Configuration ▶ SP 1.

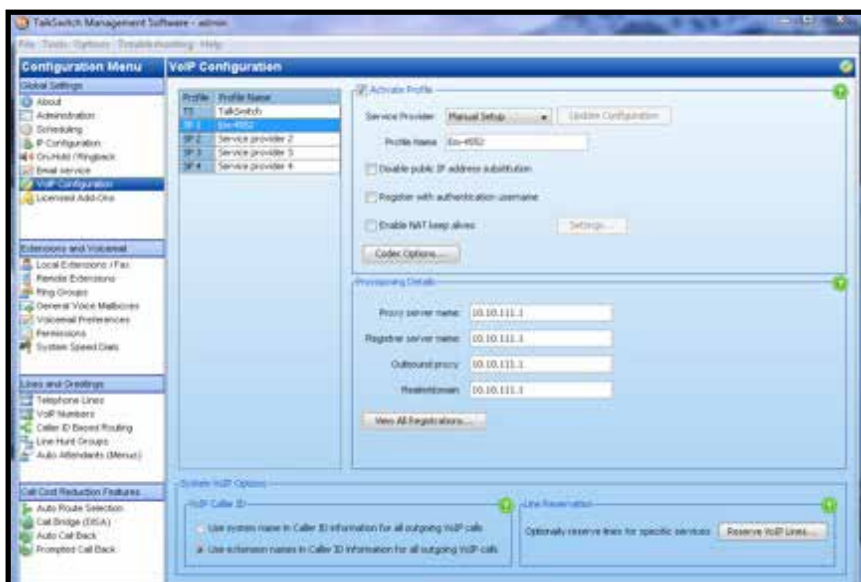
- a Service Provider drop down box, Select Manual Setup.
- b Fill in the Profile Name
- c Under Codec Options make sure G.711u is selected and set as the preferred codec.

d **For Registration mode:**

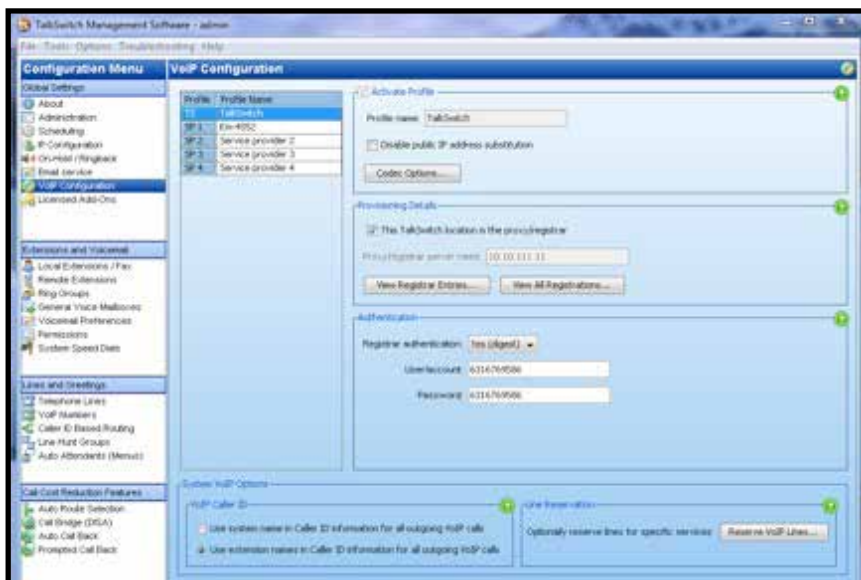
Fill in the **Proxy Server Name**, **Registrar Server Name**, **Outbound Proxy**, and **Realm/Domain** fields with the IP address of the Optimum Business Sip Trunk Adaptor's LAN interface. This is the IP address that was set up in step 2 of the Optimum Business Sip Trunk Set-up Guide.

e **For Non-Registration, Static IP mode:**

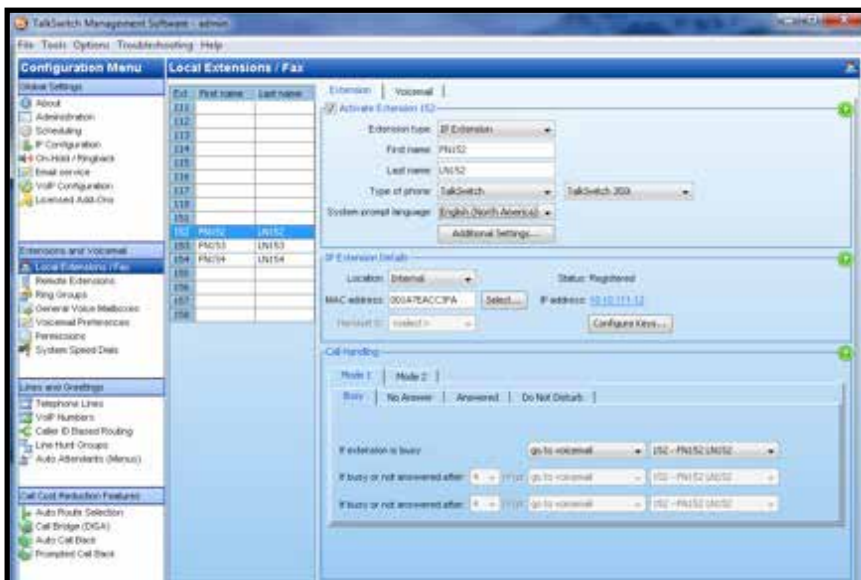
Fill in only the **Proxy Server Name and Realm/Domain** to prevent the Talkswitch from registering.



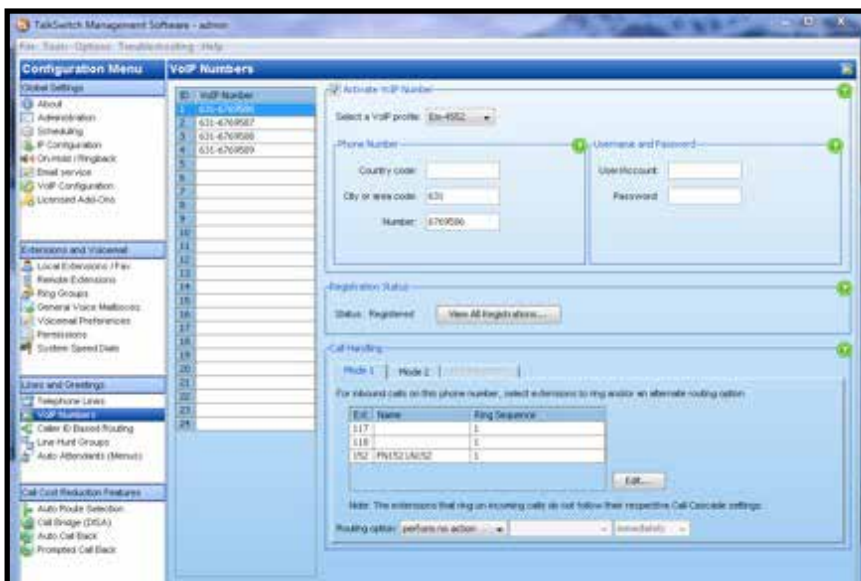
- 4 If setting up registration to the Optimum Sip Trunk Adaptor, configure the TalkSwitch profile. Check the “This TalkSwitch location is the proxy/Registrar” box, and configure the Authentication fields. In the **Registrar Authentication** Field enter **Yes**. The **User/ Account** and **Password** fields must be populated with the Optimum Business SIP Trunk Pilot Telephone number. Both fields are used by the PBX to register with the Optimum Business SIP Trunk Adaptor. The User/Account and Password must match the username and password entered into the Optimum Business SIP Trunk Adaptor when in registration mode. This is configured in step 3 of the Optimum Business SIP Trunk Set-up Guide. These fields are not used by the PBX in non-registration (static IP) mode.



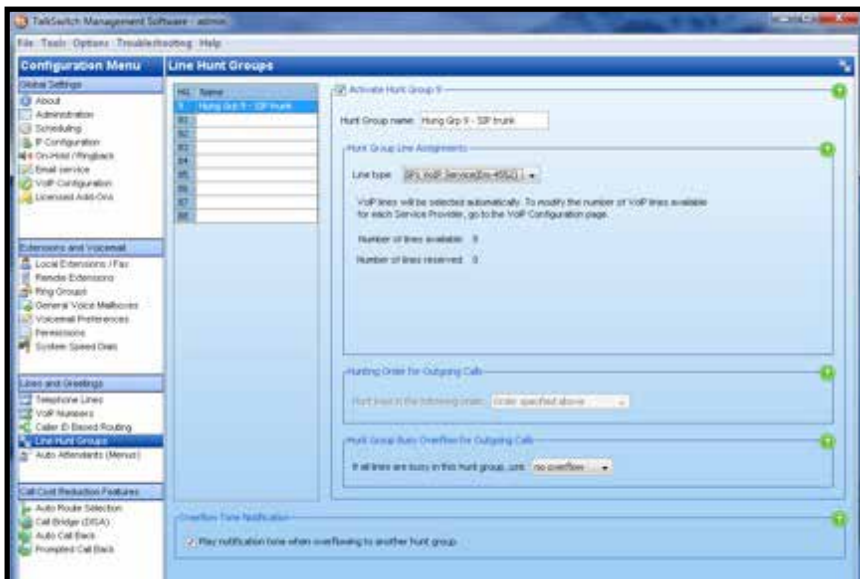
- 5 To set up each extension, go to Extensions and Voicemail ► Local Extensions / Fax. Fill in the MAC address of the phone and give the Extension a First and Last Name.



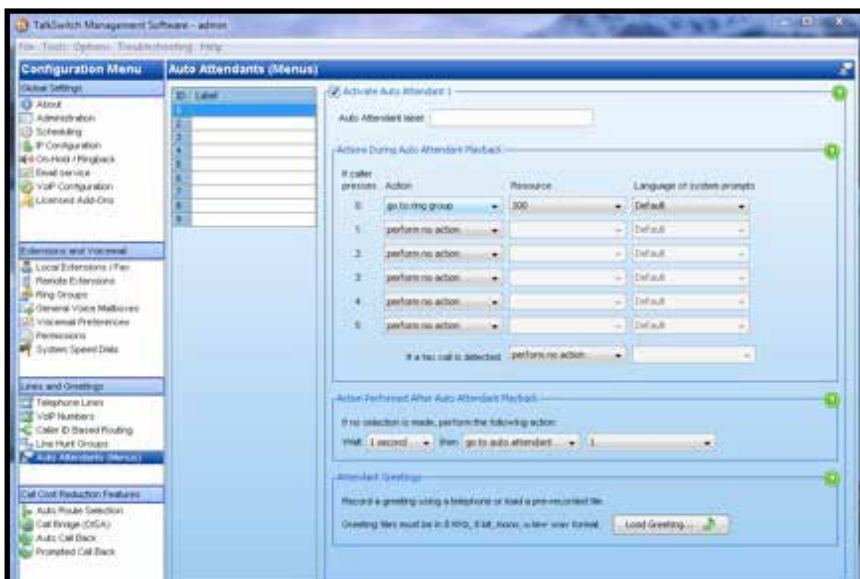
- 6 To set up the Incoming Call Routing, go to Lines and Greetings ► VoIP Numbers. Configure each line with a DID and set it to an Extension. Also set up one of the DID's to go to the Auto Attendant.



- 7 To set up the outbound Trunk, go to Lines and Greetings ► Line Hunt Group. Check the box on top “Activate Hunt Group 9”



- 8 To configure the Auto Attendant, go to Lines and Greetings ► Auto Attendants (Menus).



Important: The DTMF tone duration generated by the phones and/or PBX needs to be increased from the Talkswitch default value of 180ms-200ms to 600ms. The Optimum Business Sip Trunk Adaptor needs to be configured to Convert Inband DTMF. This is step 3 in the Optimum Business Sip Trunk Set-up Guide.